



THE
CONE
COLLECTOR

Filmer 2011.

Nomenclature and Taxonomy in Living Conidae

Section R racemosus to rutilus

Copyright © 2011.R Filmer Conditions of use.

The content of this website is provided for personal and scientific use and may be downloaded for this purpose. It may not be used in whole or part for any commercial activity and publication of any of the content on the internet is limited to the Cone Collector website(www.TheConeCollector.com). Authors wishing to publish any of the pictures may do so on a limited basis but should inform M Filmer so that the original owner of the rights to the picture can be acknowledged.

(mike@mfilmer.fsnet.co.uk)

Version 1.0 October 2011.

racemosus Sowerby III, 1874 ("1873").

Published in Proc. zool. Soc. Lond. unnumbered (41), pt. 3: p. 721, pl. 59, fig. 11.

Holotype in NMWC, (55 x 29 mm).

Type locality Sandwich Isl. uncertain, (Hawaii), (corrected erroneously), (da Motta) Madagascar.

Nomenclatural status, an available name.

Taxonomic status, a synonym (form) of *C. pennaceus* Born, 1778.



rachelae Petuch, 1988.

Published in Neogene History of Tropical American Mollusks: p. 159, pl. 36, figs 3 & 4.

Holotype in USNM, (24 x 12.5 mm).

Type locality Gulf of Triste, Venezuela, (trawled, 35 mtrs).

Nomenclatural status, an available name.

Taxonomic status, a valid species.



radiatus Gmelin, 1791.

Published in Syst. Nat. 13th ed. 1 (6): p. 3386, no. 26, not figured.

Lectotype representative (Kohn) figure in Martini, 1773, pl. 53, fig. 584, (fig. 50 x 24 mm).

Type locality not known, designated (Delsaerdt) Island of Luzon, Philippines.

Nomenclatural status, an available name.

Taxonomic status, a valid species.



radula (Röding), 1798.

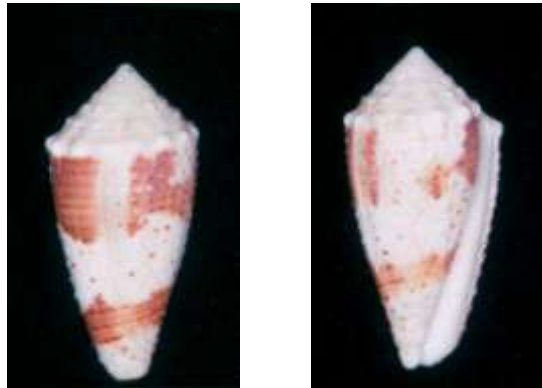
Published in Mus. Bolten 2: p. 40, no. 500/25, not figured.

Two syntypes whereabouts unknown, cited figure in Gmelin, 1791, p. 3385, no. 24, (fig. 34 x 16 mm).

Type locality not mentioned.

Nomenclatural status, an available name.

Taxonomic status, a synonym of *C. annularis* (Röding), 1798, figure cited is the same, (a synonym of *C. varius* Linnaeus, 1758).



Lectotype of *C. varius* in LSL.

rainesae McGinty, 1953.

Published in Notul. Nat. (249): p. 1, fig. 1.

Holotype in FMNH, (24.7 x 8.2 mm).

Type locality 150 miles Northeast of Progreso, Yucatan, Mexico, (East coast), (dredged, sand, 33 - 60 fths).

Nomenclatural status, an available name.

Taxonomic status, a valid species.



ramalhoi (subspecies *elegans* Sowerby) Coomans, Moolenbeek & Wils, 1986.

Published in Basteria 50 (4 - 6): p. 103, figs 670 & 705.

Holotype in NMSA, (31.7 x 10.5 mm).

Type locality Angoche, Northern Mozambique, (muddy sand).

Nomenclatural status, an available name.

Taxonomic status, a subspecies of *C. elegans* Sowerby, 1895.



ranonganus da Motta, 1978.

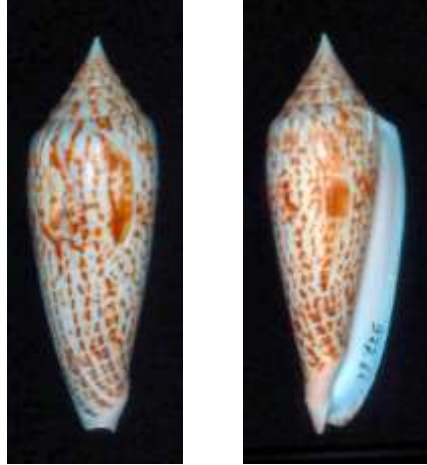
Published in Centre Thai Natural Study, 6 (1), (Bangkok): p. 4 & figs.

Holotype in MHNG, (78.5 x 26 mm).

Type locality off Ranong, Southwest Thailand into Bay of Bengal. (40 - 80 fths).

Nomenclatural status, an available name.

Taxonomic status, a valid species.



ranunculus Hwass in Bruguière, 1792.

Published in Enc. Méth. 1: p. 671, no. 65, (1798, Tab. Enc. pl. 331, fig. 1).

Type figure designated (Clench) figure in Seba, 1758, pl. 43, fig. 36, (fig. 49 x 26 mm), possible holotype in MHNG, (45 x 23 mm).

Type locality not mentioned, designated (Clench) Dutch Guiana, [erroneous].

Nomenclatural status, an available name.

Taxonomic status, a synonym of *C. achatinus* Gmelin, 1791.



Figure in Seba.



Possible holotype in MHNG.

(*Kermasprella*) ***raoulensis*** Powell, 1958.

Published in Rec. Auckland Inst. Mus. 5 (1/2): p. 83, pl. 9, fig. 1.

Holotype in ZMUC, (18 x 9.4 mm).

Type locality off Raoul Island, Kermadec Islands, (off New Zealand), (75 - 85 mtrs).

Nomenclatural status, an available name.

Taxonomic status, a valid species, or a synonym (form) of *C. howelli* Iredale, 1929.



raphanus Hwass in Bruguière, 1792.

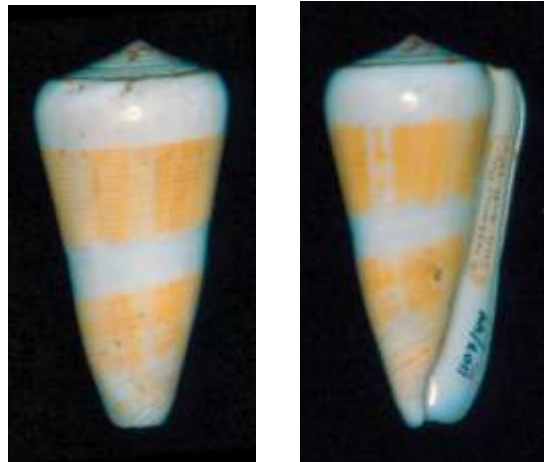
Published in Enc. Méth. 1: p. 722, no. 118, (1798, Tab. Enc. pl. 341, figs 1 & 2).

Lectotype (Kohn) in MHNG, (61 x 31 mm).

Type locality Asiatic Ocean.

Nomenclatural status, an available name.

Taxonomic status, a synonym (form) of *C. magus* Linnaeus, 1758.



rarimaculatus Sowerby II, 1870.

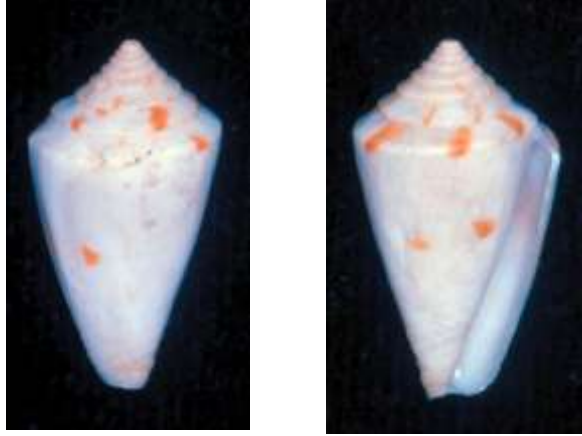
Published in Proc. zool. Soc. Lond. unnumbered (38), pt. 2: p. 257, pl. 22, fig. 4.

Two syntypes in NHMUK, (21 x 11 mm figured & 17.5 x 9 mm).

Type locality China Seas.

Nomenclatural status, an available name.

Taxonomic status, a juvenile of uncertain status (*incertae cedis*), possibly a synonym of *C. sieboldii* Reeve, 1848.



Figured syntype in NHMUK.

rattus Hwass in Bruguière, 1792.

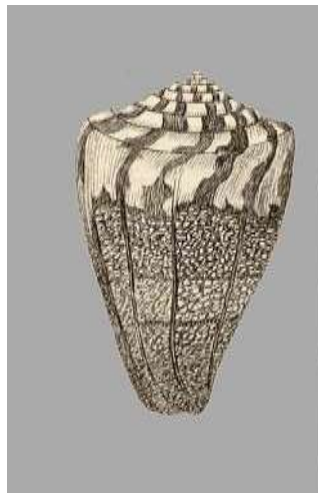
Published in Enc. Méth. 1: p. 700, no. 89, (1798, Tab. Enc. pl. 338, figs 7 & 9).

Lectotype representative (Kohn) figure in Tab. Enc. pl. 338, fig. 7, (fig. 46 x 29 mm).

Type locality America, [erroneous].

Nomenclatural status, an available name.

Taxonomic status, a valid species.



raulsilvai Rolán, Monteiro & Fernandes, 1998.

Published in Conchiglia 30 (286), p. 36 & figs.

Holotype in MNCM, (19.7 x 11.2 mm).

Type locality Navio Quebrado, Maio Island, Cape Verde, (under large rocks, rocky bottom, 0.5 to 1.5 mtrs).

Nomenclatural status, an available name.

Taxonomic status, a valid species.



ravus Gould, 1853.

Published in Boston J. nat. Hist. 6 (3): p. 386, pl. 14, fig. 21.

Holotype was in collection E. Jewett, present whereabouts unknown, (fig. 35 x 19 mm).

Type locality Santa Barbara, California.

Nomenclatural status, an available name.

Taxonomic status, a synonym of *C. californicus* Reeve, 1844.



Figure in Gould.

rawaiensis da Motta, 1978.

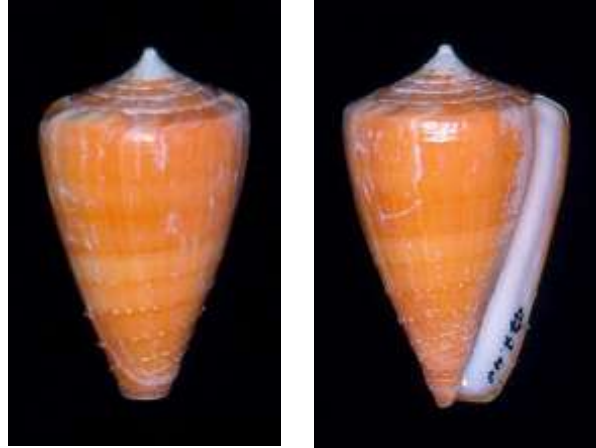
Published in Centre Thai Natural Study, 6 (1), (Bangkok): p. 8, & figs.

Holotype in MHNG, (39 x 23 mm).

Type locality off Raya Island, Phuket, Thailand, (sand & rocks, 80 - 120 ft).

Nomenclatural status, an available name.

Taxonomic status, a valid species.



recluzianus Bernardi, 1853.

Published in J. Conch. Paris, 4: p. 148, pl. 6, fig. 6, (1861, Monographie de Genre Conus: pl. 1, fig. 5).

Holotype in LMD, (58.5 x 28 mm).

Type locality China Seas.

Nomenclatural status, an available name.

Taxonomic status, a valid species.



recurvus Broderip, 1833.

Published in Proc. zool. Soc. Lond. pt. 1, no. 4: p. 54, not figured, (published 24.05.33).

Holotype (da Motta), [erroneous], lectotype (Kohn) in NHMUK, (53 x 23 mm, orig. desc. 51 x 23 mm).

Type locality Monte Cristi, (Manta, Ecuador), (gravel, 22 fths).
Nomenclatural status, an available name.

Taxonomic status, a synonym (form) of *C. regularis* Sowerby, 1833, (published 17.05.33).



reductaspiralis (subspecies *nielsenae* Marsh) Walls, 1979.

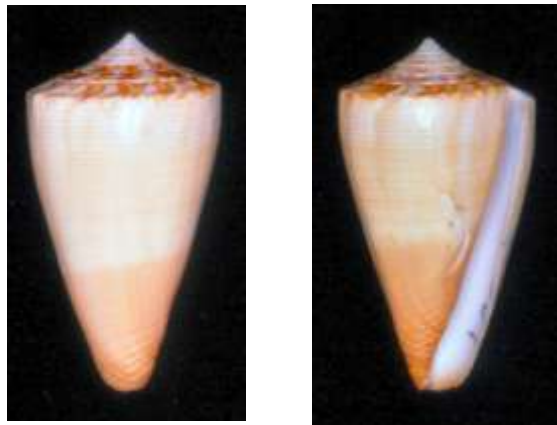
Published in Pariah (5): p. 5 & fig.

Holotype in DMNH, (33.4 x 18.3 mm).

Type locality Geraldton to Broome, Western Australia, (shallow water).

Nomenclatural status, an available name.

Taxonomic status, a valid species, raised to species by Coomans & Filmer, 1985.



reevei Kiener, 1845.

Published in Coq. Viv. 2: pl. 44, fig. 2, (1847, Coq. Viv. 2: p. 115, no. 96).

Holotype was in collection Dupont, present whereabouts unknown, (46 x ? mm), (fig. 46 x 25 mm).

Type locality not mentioned.

Nomenclatural status, an available name.

Taxonomic status, a synonym of *C. vittatus* Hwass, 1792.



Figure in Coq. Viv.

reflectus Sowerby III, 1877 ("1876").

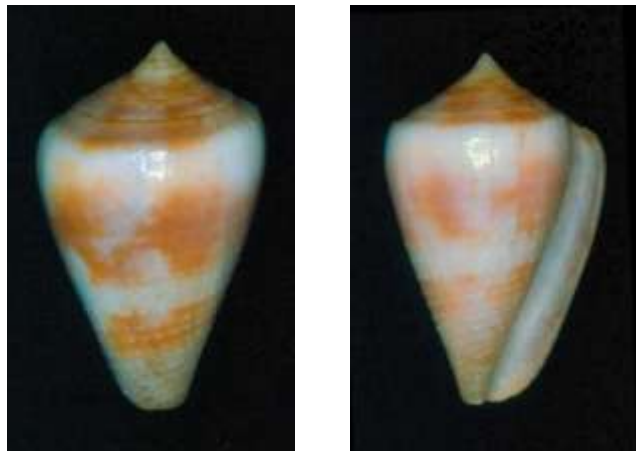
Published in Proc. zool. Soc. Lond. unnumbered (44), pt. 4: p. 754, pl. 75, fig. 6, (error for fig. 4).

Holotype in NMWC, (24.5 x 15.5 mm).

Type locality not known.

Nomenclatural status, an available name.

Taxonomic status, a synonym of *C. catus* Hwass, 1792.



reflexus Sowerby III, 1887.

Published in Thes. Conch. 5 (*Conus*), pt. 44: 2nd Sup. p. 252, no. 456, pl. 29 (507), fig. 661.

Holotype in NMWC, (24.5 x 15.5 mm).

Type locality not known.

Nomenclatural status, an available name.

Taxonomic status, an objective junior synonym of *C. reflectus* Sowerby, 1876, same type, possibly an error or an unjustified emendation for *C. reflectus* Sowerby, 1876, (a synonym of *C. catus* Hwass, 1792).



regalitatis Sowerby I & II, 1834.

Published in Conch. Ill. (*Conus*): pl. 57, fig. 87, (published Apr), (Proc. zool. Soc. Lond. pt. 2, no. 15: p. 19, published Jun).

Lectotype representative (Kohn) figure in C. I. pl. 57, fig. 87, (fig. 60 x 33 mm).

Type locality Real Llejos, Corinto, Nicaragua, (West coast), (rock clefts, sandy mud).

Nomenclatural status, an available name.

Taxonomic status, a synonym of *C. purpurascens* Sowerby, 1833.



regenfussi (variety *generalis* Linnaeus) Dautzenberg, 1937.
Published in Mem. Mus. r. Hist. nat. Belg. 2 (18): p. 120, pl. 2, fig. 6.

Holotype in IRSN, (52.6 x 23.8 mm).

Type locality Amboina, (Ambon, Indonesia).

Nomenclatural status, an available name.

Taxonomic status, a synonym of *C. generalis* Linnaeus, 1767.



regius (variety *ammiralis* Linnaeus) Gmelin, 1791.

Published in Syst. Nat. 13th ed. 1 (6): p. 3379, no number, not figured.

Type figure designated (Clench) figure in Martini, 1773, pl. 62, fig. 684, (fig. 44 x 25 mm).

Type locality not known, designated (Clench) Jaimanitas, near Havana, Cuba.

Nomenclatural status, an available name.

Taxonomic status, a valid species, as redescribed by Clench, 1942, who made this the nominal species.



regius Hwass in Bruguière, 1792.

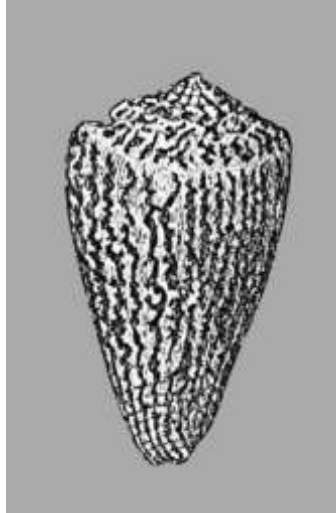
Published in Enc. Méth. 1: p. 617, no. 12, (1798, Tab. Enc. pl. 318, fig. 3).

Lectotype representative (Kohn) figure in Tab. Enc. pl. 318, fig. 3, (fig. 53 x 31 mm, orig. desc. 50 x 31 mm).

Type locality Indian Ocean. [erroneous].

Nomenclatural status, an available name, an invalid name, a homonym of *C. regius* Gmelin, 1791.

Taxonomic status, a synonym of *C. princeps* Linnaeus, 1758, (recognized later by Hwass).



regius (Röding), 1798.

Published in Mus. Bolten 2: p. 38, no. 465/2, not figured.

Lectotype representative (Kohn) figure in Chemnitz, 1788, pl. 139, fig. 1289, (fig. 48 x 27 mm).

Type locality not mentioned.

Nomenclatural status, an available name, an invalid name, a homonym of *C. regius* Gmelin, 1791, and of Hwass, 1792.

Taxonomic status, a synonym of *C. imperialis* Linnaeus, 1758.



regonae Rolán & Trovão in Rolán, 1990.

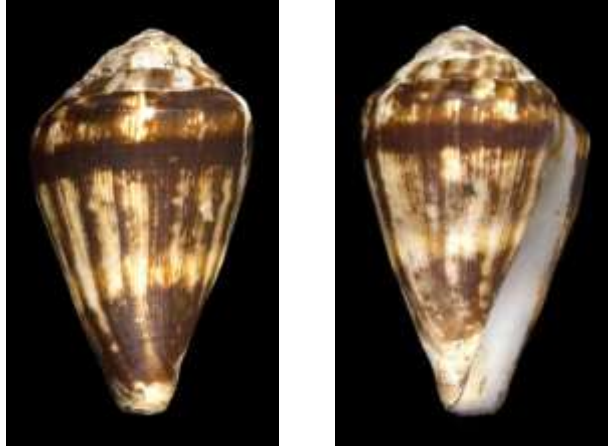
Published in *Iberus*, Sup. 2: p. 31, pl. 1, fig. 3, pl. 2, fig. 3, pl. 3, fig. D, pl. 6, fig. B & pl. 8, fig. B.

Holotype in MNCM, (32.7 x 19 mm).

Type locality Palmeira Bay, Sal Island, Cape Verde Islands, (rocks, 2 to 4 mtrs).

Nomenclatural status, an available name.

Taxonomic status, a valid species.



regularis Sowerby I & II, 1833.

Published in *Conch. Ill. (Conus)*: pl. 29, fig. 29, (published 17.05.33).

Holotype representative (da Motta), (erroneous), lectotype representative (Kohn) figure in C. I. pl. 29, fig. 29, (fig. 42 x 22 mm).

Type locality not mentioned, Bay of Nicoya, Central America (in *Thes. Conch.* 3) and Panama (Cuming), (West coast).

Nomenclatural status, an available name.

Taxonomic status, a valid species.



regus Küster, 1837.

Published in Syst. Conch.-Cab. 4 (2): p. 59, no. 44, (1838, pl. 9, fig. 3).

Lectotype representative (Kohn) figure in Küster, pl. 9, fig. 3, (fig. 55 x 33 mm, orig. desc. 48 x 32 mm).

Type locality East Indian Ocean, [erroneous].

Nomenclatural status, an available name.

Taxonomic status, a synonym of *C. princeps* Linnaeus, 1758.



rejectus (variety *purpurascens* Sowerby) Dall, 1910.

Published in Proc. U.S. natn. Mus. 38 (1741): p. 219, not figured.

Holotype in USNM, (49 x 30 mm).

Type locality Porto Escondido, Gulf of California.

Nomenclatural status, an available name.

Taxonomic status, a synonym (colour form) of *C. purpurascens* Sowerby, 1833.



remo Brazier, 1898.

Published in Proc. Linn. Soc. N.S.W. 23 (2) no. 90: p. 271, not figured.

Lectotype (Cotton) in SAMA, (35 x 17.5 mm).

Type locality San Remo, Port Phillip Bay, Victoria, (Australia).
Nomenclatural status, an available name.

Taxonomic status, a synonym (colour form) of *C. anemone* Lamarck, 1810.



renateae (subspecies *nobilis* Linnaeus) Cailliez, 1993.

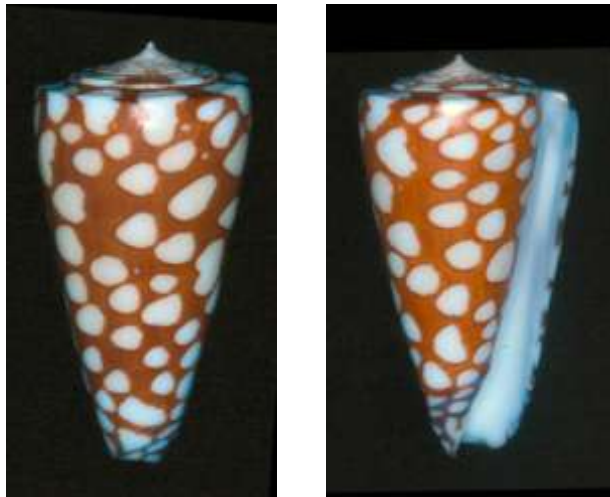
Published in Conchiglia 25 (267): p. 51 & figs 1, 4 & 8.

Holotype in NBC-ZMA, (39.9 x 21 mm).

Type locality Jolly-Boy Island, eastern beach between Red-Skin Isl. and the northern part of Rutland Isl., Andaman Islands.

Nomenclatural status, an available name.

Taxonomic status, a subspecies of *C. nobilis* Linnaeus, 1758.



rete aureum Perry, 1811.

Published in Conchology: pl. 25, fig. 5.

Holotype representative (Kohn) figure in Perry, pl. 25, fig. 5.
(fig. 96 x 50 mm).

Type locality African Seas.

Nomenclatural status, an available name.

Taxonomical status, a synonym of *C. textile* Linnaeus, 1758.



Cylinder textile form **reteflava** Bozzetti, 2011.

Published in Malacologia no.73: p. 4 & pls.

Specimens described whereabouts unknown, (50.6 to 67 mm).

Type locality Tolagnaro la Fort Dauphin, South East Madagascar.

Nomenclatural status, an unavailable name (nomen nudum),
described as a form after 1961.

Taxonomic status, none (specimens of *C. textile* Linnaeus, 1758).



Figures in Bozzetti.

reticularis Bory de Saint Vincent, 1827.

Published in *Tableau Encyclopédique et Méthodique des trois Règnes de la Nature*, (10): p. 160, pl. 334, fig. 7.

Holotype representative (Kohn) figure in Bory, pl. 334, fig. 7, (fig. 32 x 19 mm).

Type locality not mentioned.

Nomenclatural status, an available name.

Taxonomic status, a synonym (form) of *C. mercator* Linnaeus, 1758.



reticulatus Born, 1778.

Published in *Ind. Mus. Caes. Vindob*: p. 139, (1780, *Test. Mus. Caes.* p. 158, not figured).

Lectotype (Kohn) in NHMW, (25 x 15 mm, orig. desc. 26 x 11 mm).

Type locality Africa.

Nomenclatural status, an available name.

Taxonomic status, a synonym of *C. mercator* Linnaeus, 1758.



reticulatus Perry, 1811.

Published in Conchology: pl. 24, fig. 2.

Holotype representative (Kohn) figure in Perry, pl. 24, fig. 2, (fig. 61 x 37 mm).

Type locality not known.

Nomenclatural status, an available name, an invalid name, a homonym of *C. reticulatus* Born, 1778.

Taxonomic status, a synonym of *C. araneosus* Lightfoot, 1786.



reticulatus Mawe, 1823.

Published in The Linnean System of Conchology: p. 90, not figured.

Specimen named whereabouts unknown, (? mm).

Locality South Seas.

Nomenclatural status, an unavailable name (nomen nudum), named but not described or figured.

Taxonomic status, none.

reticulatus "Wood" Sowerby I & II, 1834.

Described in Conch. Ill. (*Conus*): pl. 57, fig. 86.

Lectotype representative (Kohn) figure in C. I. pl. 57, fig. 86, (fig. 34 x 18 mm).

Type locality not mentioned.

Nomenclatural status, an available name, an invalid name, a homonym of *C. reticulatus* Born, 1778 and of Perry, 1811.

Taxonomic status, a synonym of *C. lucidus* Wood, 1828.



retifer Menke, 1829.

Published in Verzeichniss der Ansehnlichen Conchylien-Sammlung des Freiherrn von der Malsburg, Pyrmont: p. 68, not figured.

Type series was in collection F.F. von der Malsburg, present whereabouts unknown, (app. 78 mm), [dubious, extremely large for species].

Type locality not known.

Nomenclatural status, an available name.

Taxonomic status, a valid species, redescribed by Sowerby in 1858.

rhododendron "Couthuoy" Jay, 1839.

Published in Catalogue of Shells in Collection Jay, (New York),
3rd ed: p. 121, no. 3805, pl. 7, figs 2 & 3.

Holotype representative (Kohn) figure in Jay, pl. 7, figs 2 & 3,
(fig. 51 x 27 mm).

Type locality Seas of Australasia.

Nomenclatural status, an available name.

Taxonomic status, a synonym of *C. adamsonii* Broderip, 1833.



richardbinghami Petuch, 1993 ? ("1992").

Published in Conchiglia 24 (265): p. 11, figs 16 & 17.

Holotype in CMNH, (35 x 19 mm).

Type locality Tuna Alley, South of Cat Cay, Great Bahama Bank,
Bahamas, (sand, next to coral reef, 20 mtrs).

Nomenclatural status, an available name.

Taxonomic status, a valid species.



richardi Fenaux, 1942.

Published in Bull. Inst. oceanogr. Monaco, (814): p. 4, fig. 11.

Type series whereabouts unknown, (fig. 45 x 25 mm).

Type locality Madagascar, [erroneous].

Nomenclatural status, an available name.

Taxonomic status, a synonym of *C. fumigatus* Hwass, 1792.



Figure in Bull. Inst.

richardsae (subspecies *luteus* Sowerby) Korn & Röckel, 1992.

Published in Acta Conch. (3): p. 16, pl. 3, figs 1 - 7.

Holotype in NMC, (36.5 x 14 mm).

Type locality Bohol, Philippines, (100 - 200 mtrs).

Nomenclatural status, an available name.

Taxonomic status, a valid species.



richeri Richard & Moolenbeek, 1988.

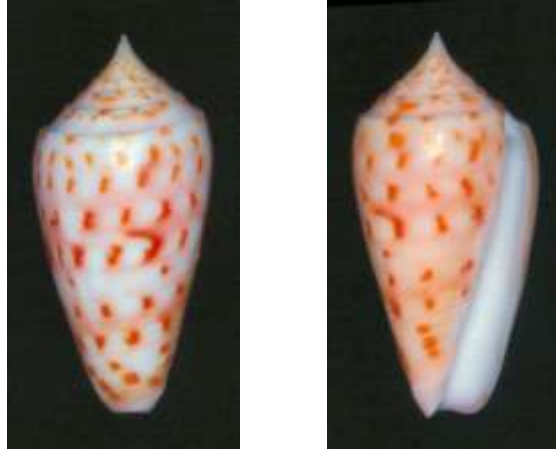
Published in *Venus*, Kyoto, 47 (4): p. 233, pl. 1, figs 1 - 5 & 10.

Holotype in MNHN, (47.9 x 22.4 mm).

Type locality North Lagoon, New Caledonia, (225 mtrs).

Nomenclatural status, an available name.

Taxonomic status, a valid species.



riosi Petuch, 1986.

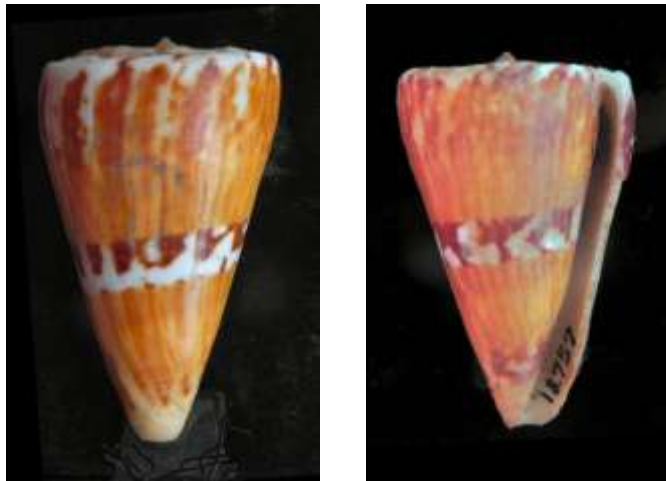
Published in *Proc. biol. Soc. Wash.* 99 (1): p. 10, figs 7 & 8.

Holotype in MORG, (54 x 32 mm).

Type locality Salvador, Bahia State, Brazil, (Trawled 50 mtrs).

Nomenclatural status, an available name.

Taxonomic status, a synonym (form) of *C. daucus* Hwass, 1792.



(*LeporiConus*) ***ritae*** Petuch, 1995.

Published in *Conchiglia* 27 (275): p. 38 & figs.

Holotype in FMNH, (27.5 x 14 mm).

Type locality Gorda Bank, off Honduras, (East coast), (coral rubble, 10 - 20 mtrs).

Nomenclatural status, an available name.

Taxonomic status, a synonym (form) of *C. glenni* Petuch, 1993.



rivularius Reeve, 1849.

Published in *Conch. Icon.* 1 (*Conus*): Sup. pl. 6, sp. 261 (311).

Two syntypes in NHMUK, (35 x 15 & 28 x 14 mm, latter figured).

Type locality Moluccas, (Indonesia).

Nomenclatural status, an available name.

Taxonomic status, a synonym (form) of *C. boeticus* Reeve, 1844.



Figured syntype in NHMUK

rizali Olivera & Biggs in Biggs, Watkins, Corneli & Olivera, 2010.

Published in Nautilus Philad. Vol. 124 (1): p. 6 & figs.

Holotype in NMPM, (26.6 x 10.2 mm).

Type locality Philippines (probably in tangle nets 100 - 200 mtrs).

Nomenclatural status, an available name.

Taxonomic status, a valid species.



Jaspidiconus **roatanensis** Petuch & Sargent, 2011.

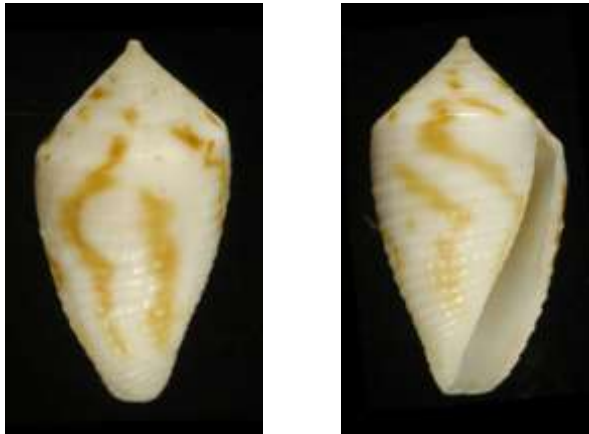
Published in Visaya Vol. 3, no. 3: p. 44, pl. 4, figs 1 -5.

Holotype in LACM, (13.9 x 7.7 mm).

Type locality Off Coxon's Hole, Roatan Island, Bay Islands, Honduras, (on sand, 10 mtrs).

Nomenclatural status, an available name.

Taxonomic status, a valid species.



roberti Richard, 2009.

Published in *Annales de la Société des Sciences naturelles de Charente-Maritime*, 9 (9): p.921, pl.1, fig.1.

Holotype in MNHN, (51.2 x 14.3 mm).

Type locality Basse Terre, Guadeloupe, (300 mtrs).

Nomenclatural status, an available name.

Taxonomic status, a valid species.



robillardi Bernardi, 1858.

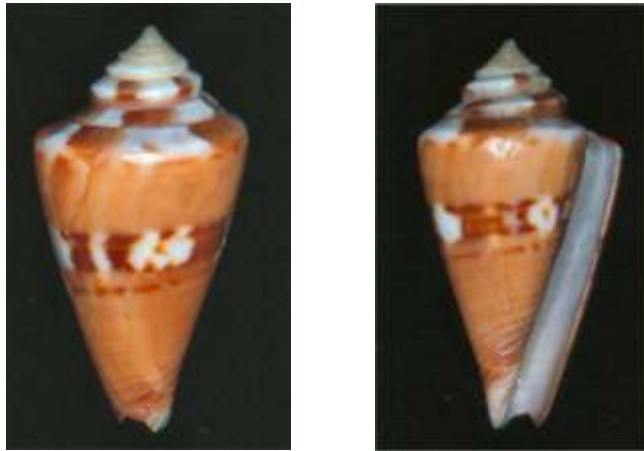
Published in *J. Conch. Paris*, 7: p. 182, pl. 7, figs 2 & 3, (1861, *Monographie de Genre Conus*: pl. 2, fig. 15).

Holotype in MNHN, (27 x 14 mm).

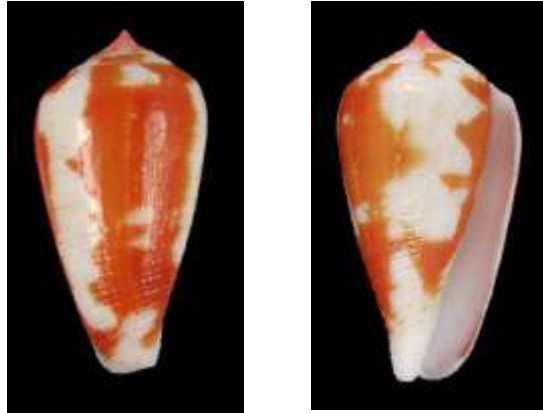
Type locality not known.

Nomenclatural status, an available name.

Taxonomic status, a synonym (juvenile) of *C. vexillum* Gmelin, 1791.



Pionoconus **robini** Limpalaër & Monnier, 2012.
Published in *Visaya* vol. 3, no. 6, & plates.
Holotype in MNHN, (26.15 x 13.50 mm).
Type locality Balabac Island, Palawan, Philippines, (10 - 25
mtrs).
Nomenclatural status, an available name.
Taxonomic status, a valid species.



roeckeli Rolán (Mosquera), 1980.
Published in *Boll. malac. Milan*, 16 (3 - 4): p. 82, pl. 2, fig. 2
& pl. 3, figs 2 & 5.
Holotype in MNCM, (13.1 x 7.2 mm).
Type locality das Gatas Bay, Boavista Is., Cape Verde Islands,
(rocks, 2 - 5 mtrs).
Nomenclatural status, an available name.
Taxonomic status, a valid species.



rogmartini da Motta, 1982.

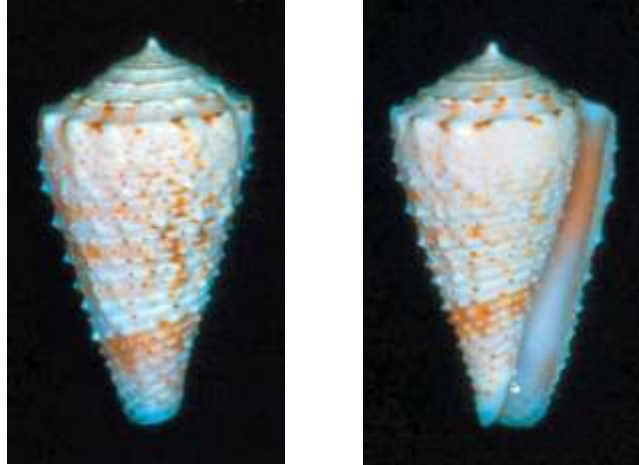
Published in Carfel 4 (2): p. 3, p. 1 & figs.

Holotype in MHNG, (31.2 x 17.4 mm).

Type locality Balut Island, Sarangani Group, South of Mindanao, Philippines, (netted, app. 120 fths).

Nomenclatural status, an available name.

Taxonomic status, a synonym (pustulate form) of *C. otohimeae* Kuroda & Ito, 1961.



rojasi O. & J.B. Lozet, 1978.

Published in Le Peigne de Venus, Coquillages du Monde Entier: p. 110, not figured.

Specimen named whereabouts unknown, (? mm).

Locality not mentioned.

Nomenclatural status, an unavailable name (nomen nudum), named but not described, indicated or figured.

Taxonomic status, none, (possibly this name refers to a specimen in collection da Motta, now in SMNS, subsequently found to be a form of *C. zeylanicus* Gmelin, 1791).

rolani Röckel, 1986.

Published in Spixiana 9 (3): p. 234, pl. 1.

Holotype in ZSM, (49 x 25.2 mm).

Type locality Tayabas Bay, S.W. Luzon and Marinduque, Philippines, (30 - 175 fths).

Nomenclatural status, an available name.

Taxonomic status, a valid species.



rollandi Bernardi, 1860.

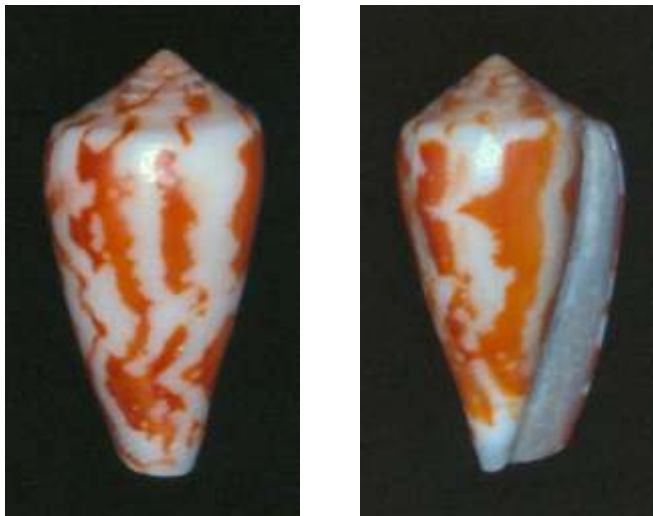
Published in J. Conch. Paris, 8: p. 332, pl. 12, fig. 4, (1861, Monographie de Genre Conus: pl. 2, fig. 14).

Holotype in MNHN, (33 x 17 mm, orig. desc. 34 x 18 mm).

Type locality not known.

Nomenclatural status, an available name.

Taxonomic status, a synonym (form) of *C. magus* Linnaeus, 1758.



roosevelti Bartsch & Rehder, 1939.

Published in *Smithson. misc. Collns.* 98 (10): p. 3, pl. 1, figs 4 & 7.

Holotype in USNM, (15.3 x 9.6 mm).

Type locality Clipperton Island, (off Central America, West coast), (rocks).

Nomenclatural status, an available name.

Taxonomic status, a synonym of *C. tiaratus* Sowerby, 1833.



rosaceus Dillwyn, 1817.

Published in *Desc. Cat. Recent Shells* 1: p. 433, no. 158, not figured.

Holotype representative (Kohn) figure in *Chemnitz*, 1795, pl. 181, figs 1756 & 1757, (figs 46 x 24 mm, orig. desc. app. 57 x 27 mm).

Type locality East Indian Seas, (Chemnitz), [erroneous].

Nomenclatural status, an available name.

Taxonomic status, a synonym (colour form) of *C. tinianus* Hwass, 1792.



rosaceus Sowerby I & II, 1834.

Published in Conch. Ill. (*Conus*): pl. 54, fig. 65, (55 in small list is erroneous).

Lectotype representative (Kohn) figure in C. I. pl. 54, fig. 65, (fig. 34 x 19 mm).

Type locality not mentioned.

Nomenclatural status, an available name, an invalid name, a homonym of *C. rosaceus* Dillwyn, 1817.

Taxonomic status, a synonym of *C. elventinus* Duclos, 1833, recognised by Sowerby in Index, 1841, (a synonym of *C. mindanus* Hwass, 1792).



rosaceus Kiener, 1845 (1849).

Published in Coq. Viv. 2: pl. 107, fig. 4, (as *C. roseus* an error), (1849 (1850) Coq. Viv. 2: p. 265, no. 232).

Holotype was in collection M. Gubba in MHNH, destroyed in World War 2, (26 x ? mm), (fig. 28 x 13 mm).

Type locality not mentioned.

Nomenclatural status, an available name, an invalid name, a homonym of *C. rosaceus* Dillwyn, 1817 and of Sowerby, 1834.

Taxonomic status, a synonym (form) of *C. iodostoma* Reeve, 1843.



Figure in Coq. Viv.

(*Purpuriconus*) ***rosalindensis*** Petuch, 1998.

Published in *Conchiglia* 30 (287): p. 34 & figs.

Holotype in FMNH, (19 x 10 mm).

Type locality South side of Rosalind Bank, Honduras, (East coast), (carbonate sand under coral slabs & coral rubble, 3 mtrs).

Nomenclatural status, an available name.

Taxonomic status, a valid species or possibly a synonym (form) of *C. cardinalis* Hwass, 1792.



rosea "Brod" (variety *geographus* Linnaeus) Sowerby I & II, 1833. Published in *Conch. Ill. (Conus)*: pl. 32, fig. 33, (published 17.05.33).

Holotype in NHMUK, (53.5 x 22 mm).

Type locality Annaa, (Anaa Isl., Tuamotu Archipelago), (on reefs).

Nomenclatural status, an available name, an invalid name, a homonym of *C. roseus* Fischer, 1807 and of Lamarck, 1810, renamed and redescribed as *C. intermedius* Reeve, 1843, a homonym renamed *C. mappa* Crosse, 1858 also a homonym renamed *C. eldredi* Morrison, 1955.

Taxonomic status, a synonym of *C. eldredi* Morrison, 1955.



rosea (variety *geographus* Linnaeus) Broderip, 1833.

Published in Proc. zool. Soc. Lond. pt. 1, no. 41: p. 55, not figured, (published 24.05.33), (figured in C. I. pl. 32, fig. 33, published 17.03.33).

Holotype in NHMUK, (53.5 x 22 mm).

Type locality Annaa, (Anaa Isl., Tuamotu Archipelago), (on reefs).

Nomenclatural status, an available name, an invalid name, a homonym of *C. roseus* Fischer, 1807, of Lamarck, 1810 and of Sowerby, 1833, (published one week earlier, renamed *C. intermedius* Reeve, 1843 (see above).



rosemaryae Petuch, 1990.

Published in Nautilus, Philad. 104 (2): p. 68, figs 34 & 35.

Holotype in USNM, (25 x 13 mm).

Type locality Portobelo, Panama, (East coast), (trawled, 85 mtrs).

Nomenclatural status, an available name.

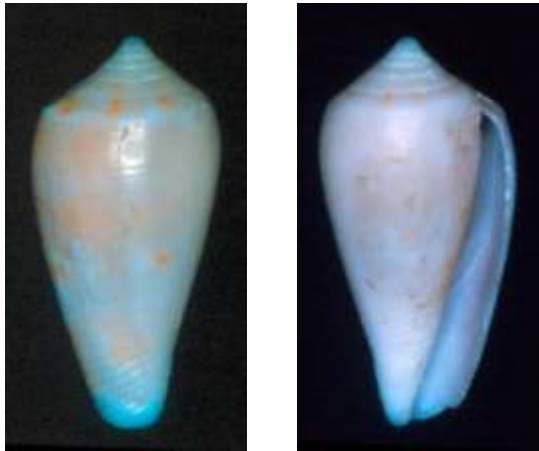
Taxonomic status, a valid species or possibly a synonym (form) of *C. garciae* da Motta, 1982.



roseorapum G. Raybaudi (Massilia) & da Motta, 1990.
Published in Conchiglia 22 (253 - 255): p. 41 & figs.
Holotype in MHNG, (50.4 x 22.8 mm).
Type locality Bohol, Philippines, (100 mtrs).
Nomenclatural status, an available name.
Taxonomic status, a valid species.



roseotinctus Sowerby II, 1866.
Published in Thes. Conch. 3 (*Conus*), pt. 24 - 25: App. p. 325,
no. 405, pl. 25 (286), fig. 604.
Holotype in NHMUK, (21 x 10 mm).
Type locality not known.
Nomenclatural status, an available name.
Taxonomic status, a synonym (colour form) of *C. anemone* Lamarck,
1810.



roseus G. Fischer von Waldheim, 1807.

Published in Mus. Démidoff 3: p. 133, no. 41, not figured.

Type series was in collection P. de Démidoff in ZMMU, destroyed by fire in 1812, (? mm), lectotype representative (Kohn) figure in Martini, 1773, pl. 52, figs 574 & 575, (figs. 43 x 21 & 45 x 21 mm).

Type locality not mentioned.

Nomenclatural status, an available name.

Taxonomic status, a synonym of *C. granulatus* Linnaeus, 1758.



roseus Lamarck, 1810.

Published in Annls. Mus. Hist. nat. Paris, 15: p. 37, no. 32, not figured.

Lectotype (Kohn) in MHNG, (30 x 21 mm).

Type locality Antilles, (erroneous), corrected (da Motta) Tayabas Bay, Luzon, Philippines.

Nomenclatural status, an available name, an invalid name, a homonym of *C. roseus* Fischer, 1807, renamed *C. neoroseus* da Motta, 1992.

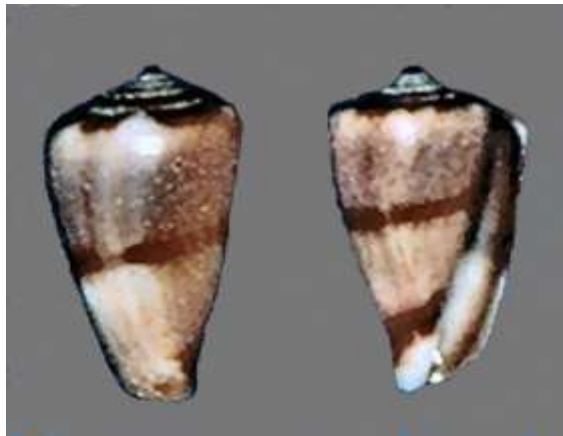
Taxonomic status, a synonym of *C. biliosus* (Röding), 1798



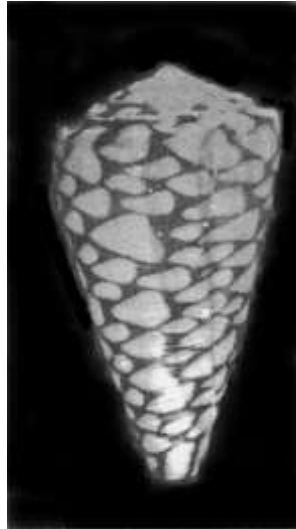
roseus (variety *aulicus* Linnaeus) Sowerby I & II, 1834.
Published in Conch. Ill. (*Conus*): pl. 55, fig. 71, (published Apr), (Proc. zool. Soc. Lond. pt. 2, no. 15: p. 18, not figured, published Jun).
Lectotype representative (Richard) figure in C. I. pl. 55, fig. 71, (fig. 88 x 33 mm).
Type locality Annaa, (Anaa Isl. Tuamotu Archipelago), (coral reefs).
Nomenclatural status, an available name, an invalid name, a homonym of *C. roseus* Fischer, 1807, of Lamarck, 1810 of *C. rosea* Sowerby, 1833 and of Broderip, 1833.
Taxonomic status, a synonym of *C. auratinus* da Motta, 1982.



rossiteri Brazier, 1870.
Published in Proc. zool. Soc. Lond. unnumbered (38), pt. 1: p. 109, not figured, (published Jun), (J. Conch. Paris, 18: p. 301, in French, published Jul).
Holotype in AMS, (14.5 x 8.5 mm. orig. desc. 16.8 x 8.4 mm).
Type locality Cape Solander, Botany Bay, N.S.W., (Australia).
Nomenclatural status, an available name.
Taxonomic status, a synonym of *C. papilliferus* Sowerby, 1834.



"rouge" (form *marmoreus crosseanus* Bernardi) Prigent, 1983.
Published in Rossiniana (21): p. 9, figs AD & A11.
Specimens named in collection J. Prigent, (fig. AD, 66.5 x 36 mm.
fig. A11, 43 x 24 mm).
Locality not mentioned.
Nomenclatural status, an unavailable name (nomen nudum), no
intention to introduce a new name, not described or indicated and
named as a form after 1960.
Taxonomic status, none, (specimens of *C. crosseanus* Bernardi,
1861, (a synonym of *C. marmoreus* Linnaeus, 1758)).



(*Dendroconus*) **royaiken**i Veldsman, 2010.
Published in Malacologia no.66, p.3 & pls.
Holotype in SAMC, 53.00 x 27.5 mm.
Type locality Port Shepstone area, Natal, South Africa, (on
reefs, SCUBA, 40 meters).
Nomenclatural status, an available name.
Taxonomic status, a valid species.



rubens (variety *mediterraneus* Hwass) Bucquoy, Dautzenberg & Dollfus, 1882.

Published in *Mollusques Marine Roussillon*, (Paris), 1 (2): p. 83, pl. 13, figs 21 & 22, mis-spelled *rubescens* on plate.

Type series whereabouts unknown, (figs 19 x 10 & 14 x 8 mm).

Type locality Barbary, (North Africa), (in sponges), (Guilliou).

Nomenclatural status, an available name.

Taxonomic status, a synonym of *C. ventricosus* Gmelin, 1791.



Figure in Bucquoy et al.

rubescens Schröter, 1803.

Published in *Arch. Zool. Zoot.* 3 (2): p. 73, not figured
Holotype was in MNG, destroyed in World War 2, (dimensions not given).

Type locality not mentioned.

Nomenclatural status, an available name.

Taxonomic status, doubtful (nomen dubium), lost holotype, no figure or locality and an inadequate description.

rubescens Bonnet, 1864.

Published in Revue Mag. Zool. 2 (16): p. 282, pl. 22, fig. 6.
Holotype representative (Lauer) figure in Bonnet, pl. 22, fig. 6,
(fig. 48 x 25 mm).

Type locality Ile of Anam, [off Vietnam ?].

Nomenclatural status, an available name, an invalid name, a
homonym of *C. rubescens* Schröter, 1803.

Taxonomic status, a synonym of *C. canonicus* Hwass, 1792, as
suspected by Bonnet.



rubiginosus "S" Lightfoot, 1786.

Published in Cat. Portland Mus: p. 185, no. 3943, not figured.
Two specimens named sold at auction, present whereabouts unknown,
(? mm).

Locality not known.

Nomenclatural status, an unavailable name (nomen nudum), named
but not described or figured.

Taxonomic status, none, (probably specimens of *C. rubiginosus*
Hwass, 1792).

rubiginosus Hwass in Bruguière, 1792.

Published in Enc. Méth. 1: p. 744, no. 138, (1798, Tab. Enc. pl. 344, figs 1 & 2).

Lectotype (Kohn) in MHNG, (66 x 35 mm, orig. desc. 74 x 36 mm).

Type locality Mindanao, Philippines, Amboina, (Ambon, Indonesia), Ile de France, (Mauritius), restricted (Kohn) to Mindanao.

Nomenclatural status, an available name.

Taxonomic status, a synonym (colour form) of *C. pennaceus* Born, 1778.



rubrapapillosa (variety *catus* Hwass) Dautzenberg, 1937.

Published in Mem. Mus. r. Hist. nat. Belg. 2 (18): p. 62, pl. 1, fig. 7.

Holotype in IRSN, (36 x 24 mm).

Type locality Tjilaoet, Eureun, (West Java, Indonesia), (de Priester).

Nomenclatural status, an available name.

Taxonomic status, a synonym (colour form) of *C. catus* Hwass, 1792.



rubropennatus da Motta, 1982.

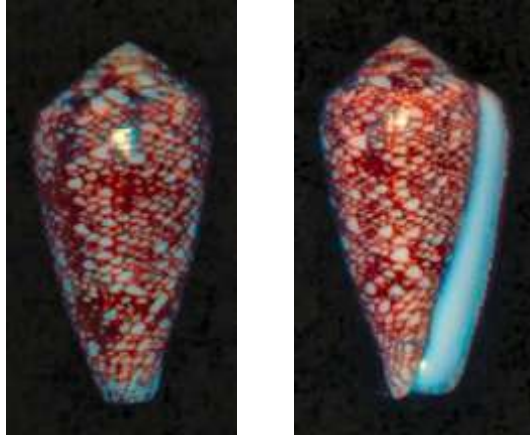
Published in Publcoes. Occ. Soc. port. malac. (1): p. 6, figs 6a & b.

Holotype in MHNG, (40 x 21 mm).

Type locality Reunion Island, Indian Ocean, (shallow water).

Nomenclatural status, an available name.

Taxonomic status, a synonym (form) of *C. pennaceus* Born, 1778.



rudiae Magnotte, 1971.

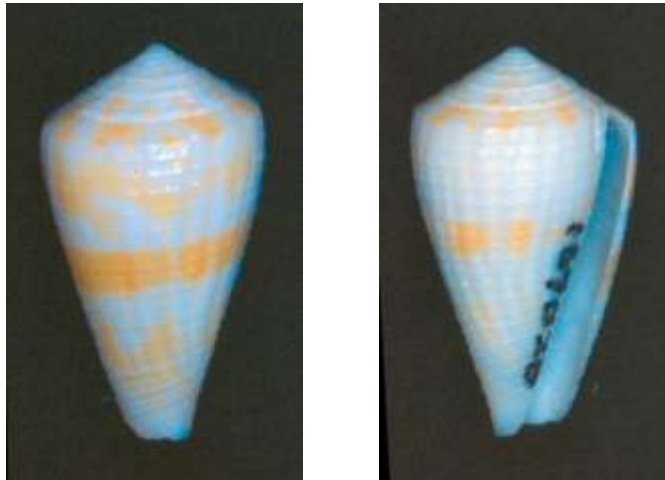
Published in Busycon Bugle 6, (Broward Shell Club, U.S.A.), no. 10: p. 11, pl. 1, figs 1 & 2, (published Dec).

Specimen described in AMNH, (24 x 13 mm).

Locality off Pompano Beach, Florida, (dredged, 13 fths).

Nomenclatural status, an available name.

Taxonomic status, none, (a synonym of *C. patae* Abbott, 1971, published one day earlier).



rudis "Chemnitz" Dillwyn, 1817.

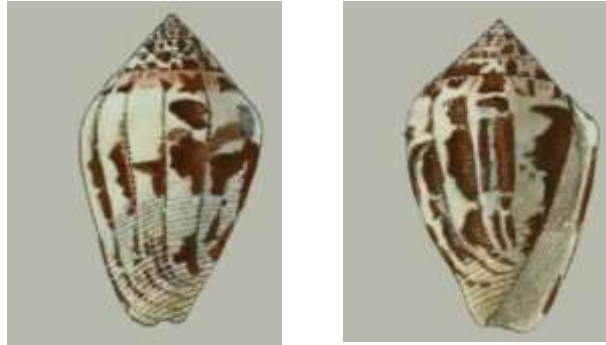
Published in Desc. Cat. Recent Shells 1: p. 431, no. 153, not figured.

Specimens named whereabouts unknown, cited figure in Chemnitz, 1788, pl. 144A, figs F & E, (fig. F, 54 x 33 & fig. E, 58 x 31 mm).

Locality not mentioned.

Nomenclatural status, an unavailable name (nomen nudum), cited as a synonym of *C. informis* Hwass, 1792.

Taxonomic status, none, (specimens of *C. mozambicus* Hwass, 1792).



Figures cited in Chemnitz 1788.

rudis "Chemnitz" Weinkauff, 1873.

Published in Syst. Conch.-Cab. 4 (2) *Conus*: p. 158, pl. 10, figs 1 & 2.

Type series whereabouts unknown, (fig. 53 x 31 mm).

Type locality not mentioned.

Nomenclatural status, an available name.

Taxonomic status, a synonym of *C. mozambicus* Hwass, 1792.



Figures in Weinkauff.

rufa (variety *ignobilis* Olivi) Scacci, 1836.

Published in Catalogus Conchyliorum Regni Neapolitani: p. 9, not figured.

Specimen named whereabouts unknown, (? mm).

Locality Italy.

Nomenclatural status, an unavailable name (nomen nudum), named but not described or figured.

Taxonomic status, none, (a specimen of *C. ventricosus* Gmelin, 1791).

rufatra (variety *mediterraneus* Hwass) de Gregorio, 1885.

Published in Boll. Soc. malac. ital. 11: p. 112, not figured.

Type series in MPUP but no longer identifiable, (? mm).

Type locality Barbary, (North Africa), (sponge zone).

Nomenclatural status, an available name.

Taxonomic status, a synonym of *C. ventricosus* Gmelin, 1791.

rufimaculosus Macpherson, 1959.

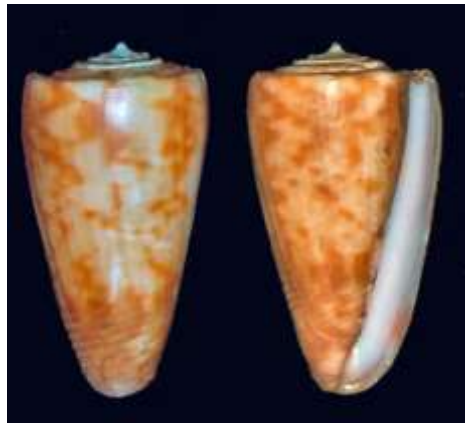
Published in Mem. natn. Mus. Melb. (24): p. 54, pl. 56, figs 5, 5a - 5c.

Holotype in NMVM, (34 x 18.4 mm).

Type locality Tweed Head, N.S.W., Australia, (dredged, 15 - 30 fths).

Nomenclatural status, an available name.

Taxonomic status, a valid species.



rufoluteus (subspecies *betulinus* Linnaeus) Bozzetti & Ferrario, 2005.

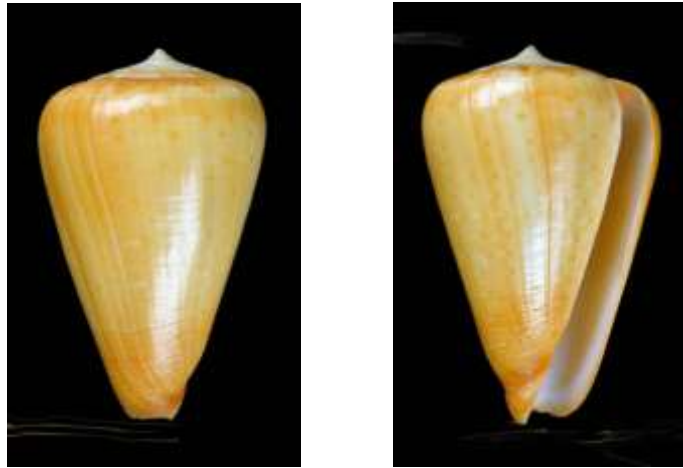
Published in *Visaya* vol. 1, no. 4: p. 54, pl. 3.

Holotype in MNHN, (82.2 x 50.5 mm).

Type locality Toliar [Tulear], south-western Madagascar, (inside coral reef, diving in shallow water).

Nomenclatural status, an available name.

Taxonomical status, a synonym (colour form) of *C. betulinus* Linnaeus, 1758.



rugosus (forma *telatus* Reeve) Lauer, 1988.

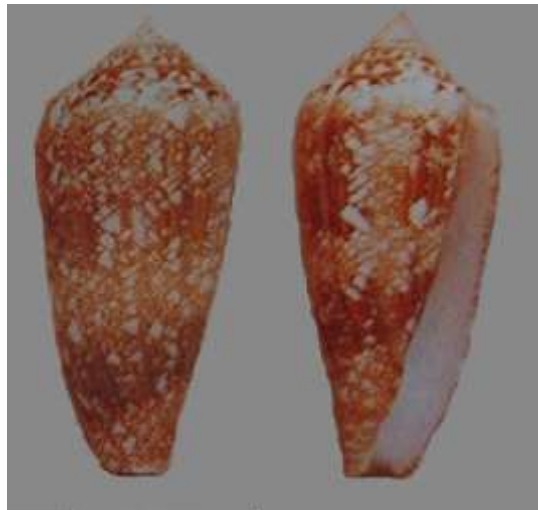
Published in *Rossiniana* (38): p. 13, no. 52, fig. 39.

Specimen described in collection J.M. Lauer, (app. 72 x 33 mm).

Locality Bohol, Philippines.

Nomenclatural status, an unavailable name (nomen nudum), described as a form after 1960.

Taxonomic status, none, (a corded specimen of *C. telatus* Reeve, 1848).



ruppellii Reeve, 1848.

Published in Conch. Icon. 1 (*Conus*): Sup. pl. 2, sp. 273.

Two syntypes in NHMUK, (24.5 x 14 mm. figured & 24 x 13 mm).

Type locality Red Sea (Ruppell), corrected (Filmer) to Philippines.

Nomenclatural status, an available name.

Taxonomic status, a synonym (form) of *C. boeticus* Reeve, 1844.



Figured syntype in NHMUK.

rusticus Linnaeus, 1758.

Published in Syst. Nat. 10th ed. (1): p. 714, no. 264, not figured.

Type series whereabouts unknown, (Linnaeus cited different species), (? mm).

Type locality Africa.

Nomenclatural status, an available name, a totally suppressed name, on Official Index of Rejected and Invalid Specific Names in Zoology, ICZN, Opinion 753, (1965), see Section 1 B (1).

Taxonomic status, none.

rusticus Poli, 1826.

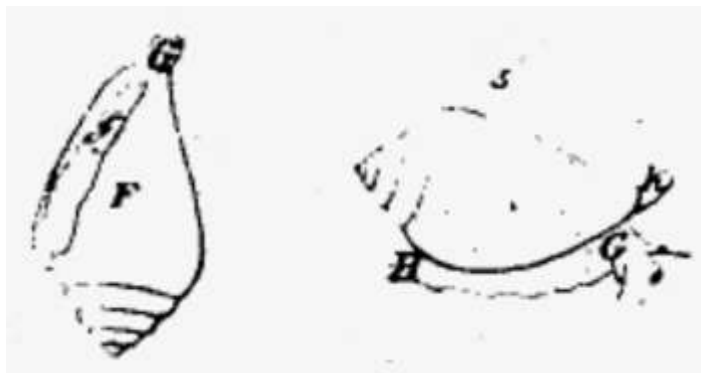
Published in *Testacea Utriusque Siciliae, eorumque Historia et Anatome*, 3 (1), (Parma): p. 38, pl. 45, figs 4 - 6.

Lectotype representative (Kohn) figure in Poli, 1826, pl. 45, fig. 5, (fig. 27 x 16 mm)

Type locality Sicily, (Italy).

Nomenclatural status, an available name, an invalid name, a homonym of *C. rusticus* Linnaeus, 1758, a totally suppressed name, see above.

Taxonomic status, a synonym of *C. ventricosus* Gmelin, 1791.



rusticus Delle Chiaje, 1827.

Published in *Testacea Utriusque Siciliae, eorumque Historia et Anatome*, 3 (2), Pars Altera (Parma): p.5, not figured.

Lectotype representative (Kohn, by inference) fig. in Poli, 1826, pl. 45, fig. 5, (fig. 27 x 16 mm).

Type locality Sicily, (Italy).

Nomenclatural status, an available name, an invalid name, a homonym of *C. rusticus* Linnaeus, 1758, a totally suppressed name, see above and of Poli, 1826.

Taxonomic status, an objective junior synonym of *C. rusticus* Poli, 1826, same type, (a synonym of *C. ventricosus* Gmelin, 1791).

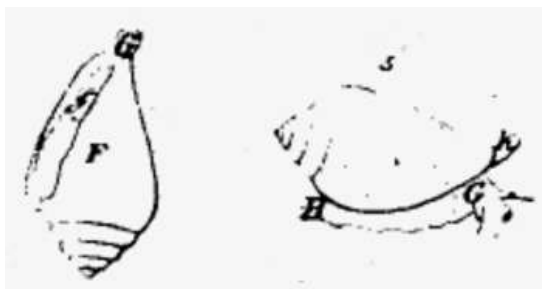


Figure of *C. rusticus* Poli.

rutilans Lightfoot, 1786.

Published in Cat. Portland Mus: p. 100, no. 2198, not figured.
Specimen(s) named sold at auction, present whereabouts unknown, (? mm).

Locality not mentioned.

Nomenclatural status, an unavailable name (nomen nudum), named but not described or figured.

Taxonomic status, none.

rutilus Menke, 1843.

Published in Molluscorum Novae Hollandiae, (Hanover): p. 27, sp. 133, not figured.

Holotype whereabouts unknown, (app. 13.8 x 8.7 mm).

Type locality South Seas.

Nomenclatural status, an available name.

Taxonomic status, a valid species.