



Collecting at Cabo Santa Maria



Cabo Santa Maria Lighthouse(abandoned)

Santa Maria is the type locality for *C. carnalis*. Rolán & Röckel, 2000 list a number of species from the locality as part of their review set. *C. africanus*, *C. albuquerquei*, *C. bulbus*, *C.*

micropunctatus, *C.lineopunctatus*, *C. musivus*, *C.naranjus*, *C.nobrei*, *C.variegatus*,
C.zebroides.

Conus aff. micropunctatus



C aff. *micropunctatus* Santa Maria 27mm



Santa Maria 23-27mm

A population of white shells with an orange pattern have traits of *C. micropunctatus* and *C. lineopunctatus*.

Shell average size 23-27mm; ventricosely conical but elongate; spire outline rounded; no striae on whorl tops, top of last whorl obliquely raised and concave creating open suture; ground colour white with spiral rows of orange-brown dots and lots of dashes; clustering in

bands and developing more solid orange bands. Spire with brown axial flammules on shoulder. Aperture developing tones of orange or purple in strongly patterned specimens.

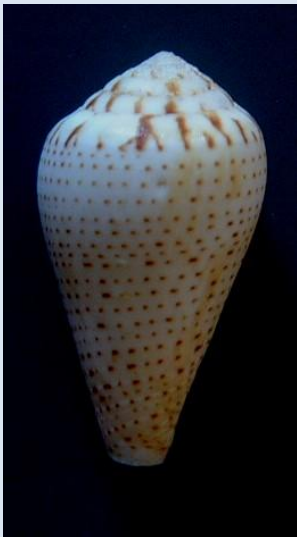
Comparison

Similar to *C. micropunctatus* with differences in pattern eg mainly dashes not dots; orange not brown pattern; development of orange bands; solid flammules on the shoulder not hairlines; development of orange or purple blotches in aperture. Its shape is much narrower than *C. lineopunctatus* and the orange bands are not typical of this species.

Some specimens have a blue background colour and develop a purple aperture in its upper half.

Orange specimens are referenced in Rolán and Röckel 2000.

“There are some Angolan Conus populations, which might be affiliated to *C. micropunctatus* with respect to their similar shell pattern. One of them, having a smaller size (L < 26 mm) and orange shade, could be an ecotype of *C. naranjus* or another valid species. Its punctated spiral lines are very dense and often fuse in continuous lines. We provisionally separate them from *C. micropunctatus*”



Santa Maria 26mm CS



Santa Maria 24mm CS



Santa Maria 26mm CS

Other specimens(26mm) are much closer to *C. lineopunctatus* but have orange areas in their pattern. The areas can look as if some of their periostracum remains on the whorl surface.



Santa Maria 25mm CS

Santa Maria 23mm CS

Santa Maria 24mm CS

Variations in shell shape and the size of dashes in the pattern are common. Specimens with a blue grey ground colour are found and have purple areas in the aperture.

Conus albuquerquei

Some fine specimens of *Conus albuquerquei* were circulated by Atoll Seashells (www.atollseashells.com).



Santa Maria 13mm



Santa Maria 15mm



Santa Maria 17mm GM



Santa Maria 14/17mm GM



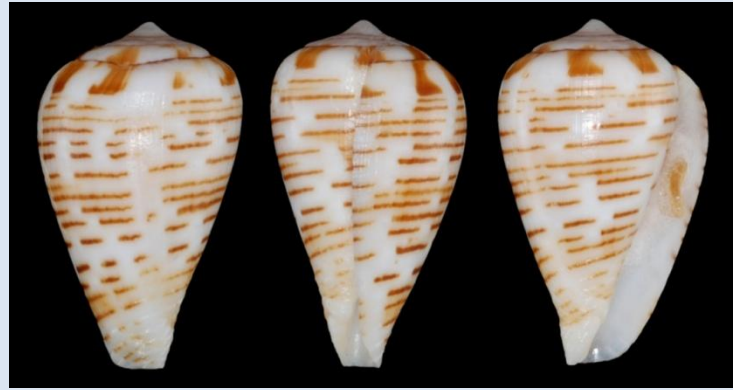
Santa Maria 13mm RR2000

Specimens with the larger flammules can be similar to *C. bulbosus* but usually have spiral bands in their patterns.

Conus aff lobitensis

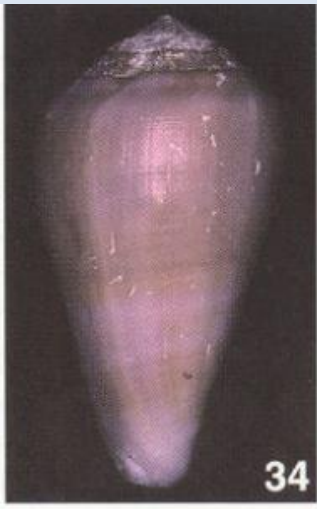


Santa Maria 17mm



Santa Maria 14mm

Conus carnalis Sowerby, 1879



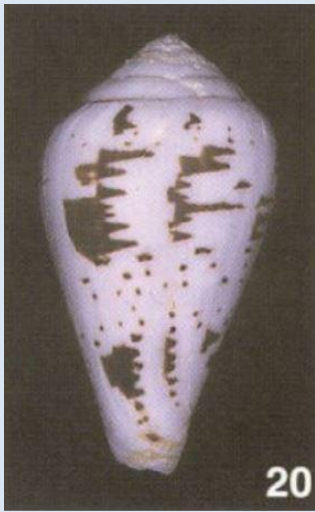
Santa Maria 39mm RR



Santa Maria 57mm GM

Specimens of the typical purple form are found at Santa Maria as are also white forms.

Conus lineopunctatus Kaicher, 1977

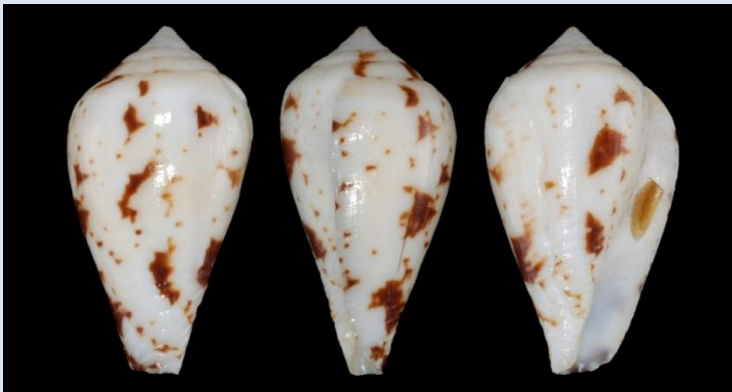


Santa Maria 32mm RR



Santa Maria 24mm RR

Specimens tend to have a pattern which includes larger areas of brown formed from chevrons as illustrated in Rolán & Röckel, 2000 and by Atoll Seashells (www.atollseashells.com)

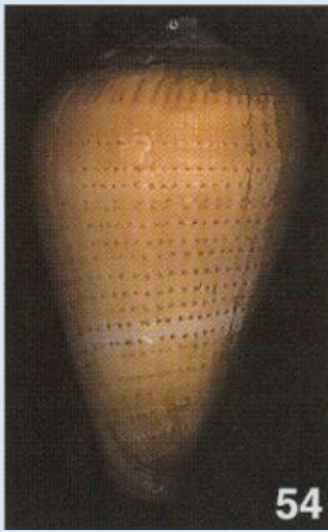


Santa Maria 17mm

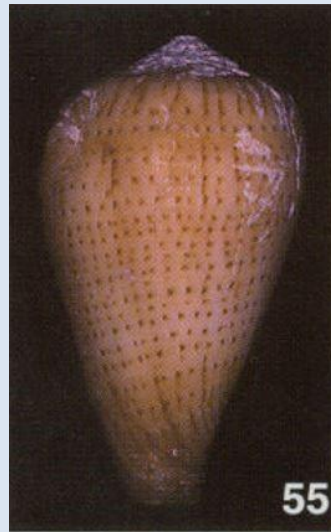


Santa Maria 31mm

Conus naranjus Trovao, 1975



Santa Maria 18mm RR



Santa Maria 18mm RR



Santa Maria 20mm GM

Specimens are found of the form with dots dominant in their pattern but also with the more typical pattern of the dots forming axial lines.
