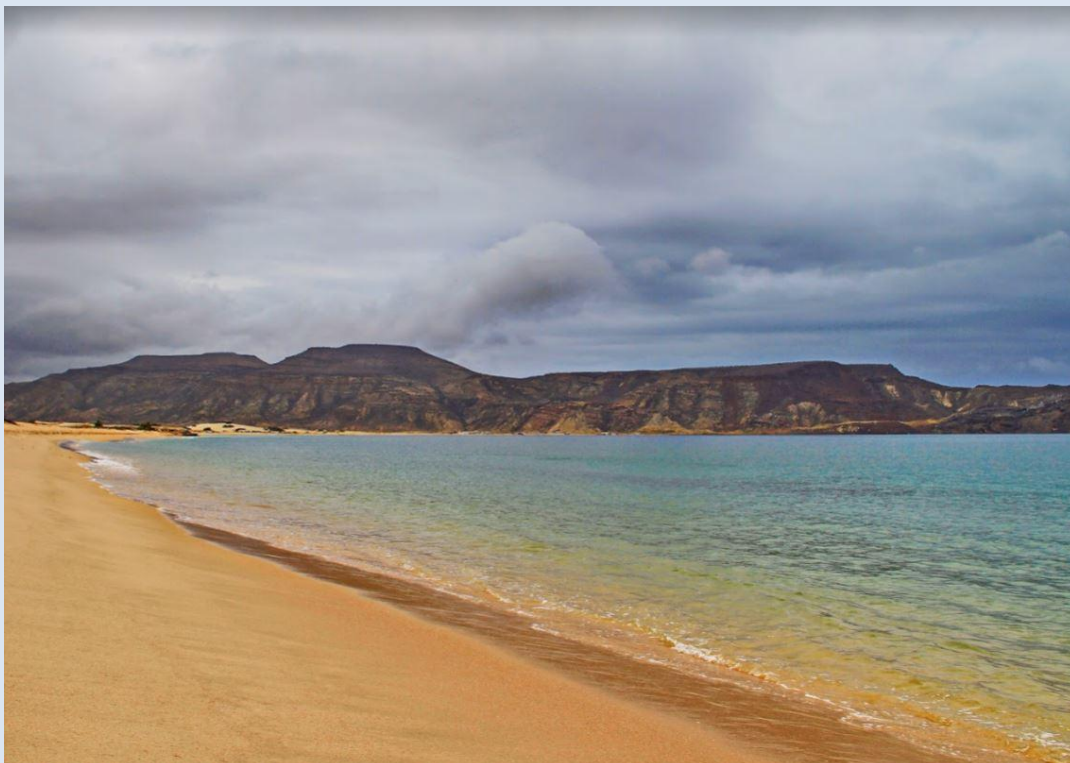
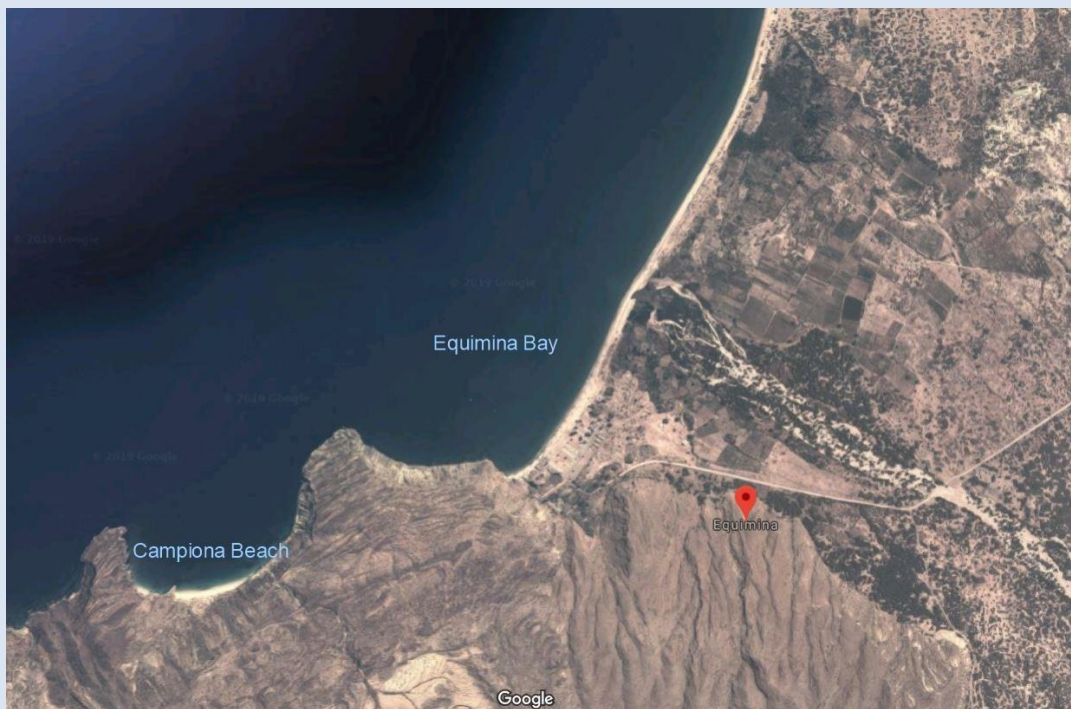




Collecting at Equimina and Campiona

Note: Campiona is also spelt “Campeona”



Equimina is the type locality for *C. annegretae*, *C. equiminaensis* and *C. nunesi* described by Chris Schönherr in 2018.

***Conus annegretae* Schönherr, 2018**



C. annegretae paratype GM 33mm



C. annegretae paratype GM. 32mm



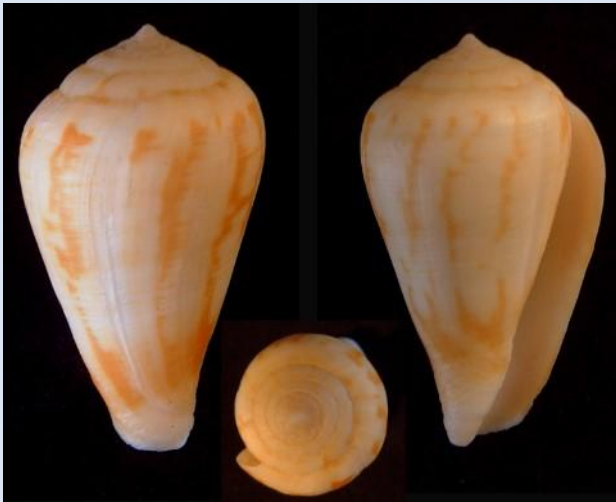
C. annegretae GM 35mm



C. annegretae Holotype MNCN

Most specimens are similar to the holotype with a ground colour of orange yellow and a white spiral band below middle. One of the paratypes (32mm) shows a colour pattern which is mainly white with weak yellow spiral bands.

Conus nunesi Schönherr, 2018



C. nunesi 35mm GM



35mm Paratype GM



36mm Paratype GM



C. nunesi Paratype 31mm GM



C. nunesi Holotype MNCN

The specimens show consistency of colour pattern with some variation in whorl shape.

Conus equiminaensis Schönherr, 2018



C. equiminaensis Holotype MNCN 1.

C. equiminaensis 24mm CA 2.



C. equiminaensis 27mm GM 3

C. equiminaensis 28mm GM 4

C. equiminaensis 24mm GM 5

Specimens 1 and 2 have the typical colour pattern of blue ground colour with a narrow white spiral band below the middle and many spiral rows of small closely packed brown dots. Specimens 3 -5 show a weaker blue ground colour turning to white and the introduction of yellow/orange elements into the pattern.

Conus species.



Campiona 18-25mm CS

A set of specimens from Campiona nearby to Equimina which could be interpreted as *C. variegatus* or *C. aff. equiminaensis*. They all have a gold spiral band just below shoulder.

Conus trovai Rolán & Röckel, 2000



C. trovai 38mm GM



C. aff trovai 35mm GM

Conus trovai is found in a non typical form with a ground colour of tones of orange over a light grey, strong wavy brown flammules and a lighter aperture. The shape of the 35mm specimen contrasts with the more typical shape of the 38mm and its colour pattern is much reduced.



C. trovai Equimina 24mm GM

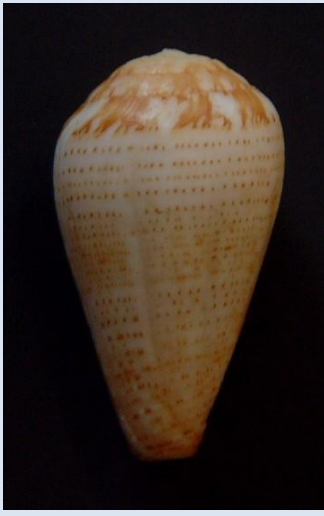


Species Campiona 22mm CS

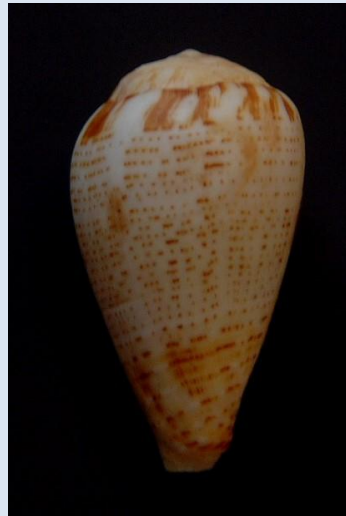


The 24mm specimen is greyish green with strong wavy axial flammules. At first sight of its dorsal side, the 22mm specimen looks similar to a typical form of *C. trovai* green/grey with spiral bands at the shoulder and below the middle. However on the ventral side it has the spotted pattern and other features of *C. equiminaensis*.

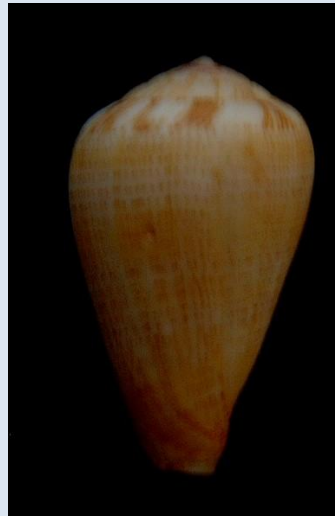
Conus micropunctatus Rolán & Röckel, 2000



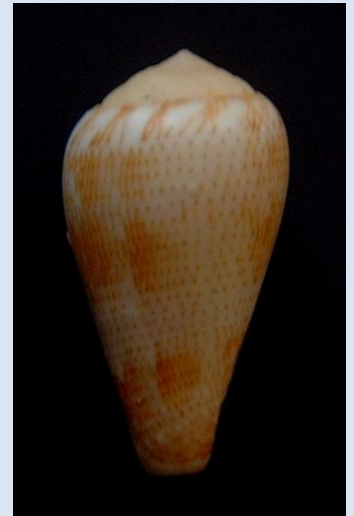
Campiona 24mm CS



Campiona 25mm CS



Campiona 25mm CS

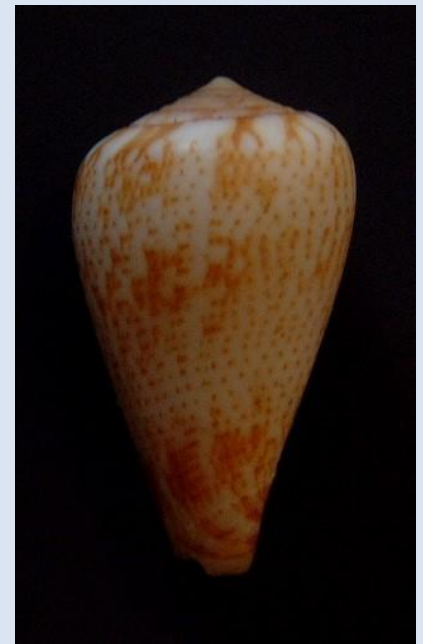


Campiona 23mm CS

Typical forms of *C. micropunctatus*(24mm) are found at Campiona, however many specimens develop orange dashes or clouds of orange in the pattern.



Campiona 24mm CS



Campiona 23mm CS

The 24mm specimen has developed a blue/ grey ground colour and purple blotch in the aperture. The 23mm specimen shows a completely different shape compared to the typical form and its pattern is beginning to show some vertical integration of the dots and traits which are found in some specimens of *C. naranjus*.

Conus species



Campiona 19mm CS 1.

Campiona species 23mm CS 2.

Campiona 20mm CS 3.

Specimen 1 is probably a colour form of *C. equiminaensis* in which the pattern of dots is reduced and some axial lines are beginning to form. Specimens 2 and 3 are difficult to interpret.

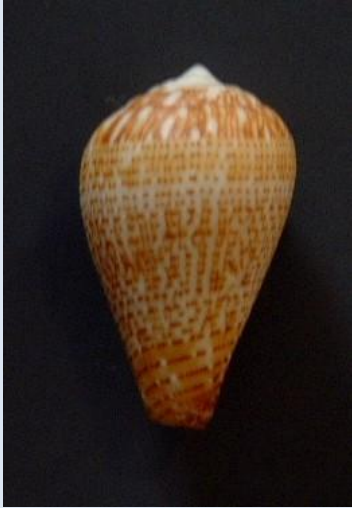


Campiona 24mm CS 4.

Campiona 25mm CS 5.

Campiona 22mm CS.6.

Specimen 4 is a form of *C. equiminaensis*. Specimens 5 and 6 could be extreme forms of the orange coloured *C. micropunctatus* but could also be interpreted as the spotted form of *C. naranjus*.



Campiona 17mm CS



Campiona 17mm CS



Campiona_20mm CS

Specimens with unusual patterns which are difficult to interpret.

Conus aff bulbus



Campiona *C.bulbus* 22mm CS



C.bulbus 13mm CS

C. bulbus is not recorded from Equimina but is known from nearby bays.

Conus chytreus Tryon, 1884



Campiona *C. chytreus* 23mm CS



Campiona_27mm CS

Typical forms of *C. chytreus*(23mm) are found with a solid brown spire, spiral rows of continuous lines and a white aperture. Specimens with a blue ground colour develop a purple aperture and dense hairline pattern on the shoulder.



Campiona *C. chytreus*
22mm_CS



Campiona *C. chytreus* 30mm CS

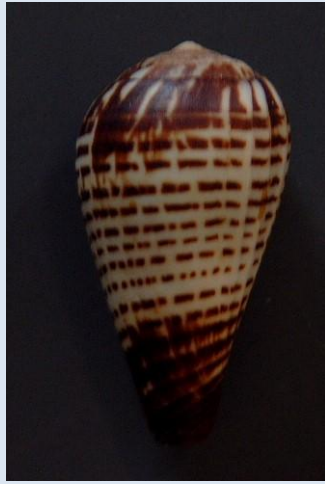


Campiona *C. chytreus* 24mm CS

Most specimens have an off white ground colour and thick dark spiral lines.



Campiona_28mm CS



Campiona_25mm CS



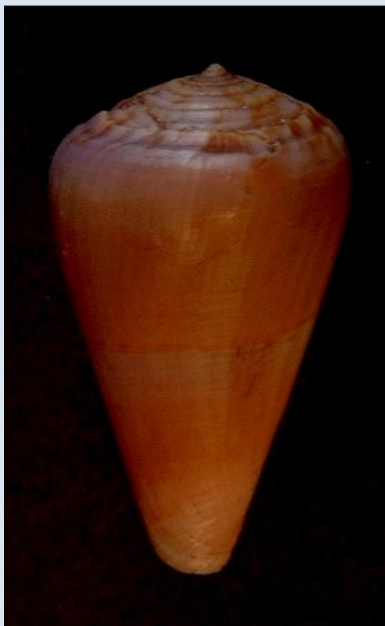
Campiona 15mm CS



Campiona_18mm CS

A large 28mm blue specimen with a similar 25mm specimen. The juvenile 15mm exhibits a similar pattern but with long well spaced dashes. The 18mm specimen is difficult to interpret.

***Conus carnalis* Sowerby, 1879**



Equimina 34mm GM



Equimina 63mm GM

Specimens are found with a low spire or with a raised spire displaying the unusual rough suture giving the impression of nodules. Based on the nodulose structure of the spire *C. carnalis* is the type species of the genus *Pseudonoduloconus*.

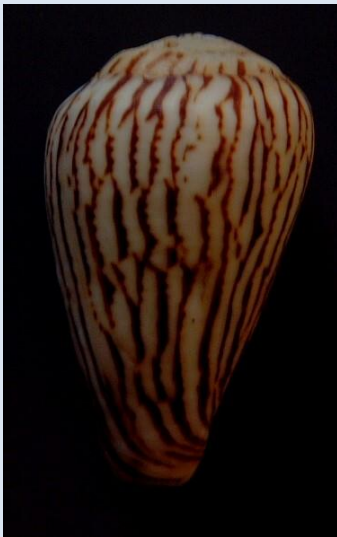
Conus nobrei Trovão, 1975



Equimina Campiona 18mm GM

Specimens of this form are illustrated in several publications. The pattern of the shoulder and spire whorls is very distinctive.

Conus zebroides Kiener, 1848



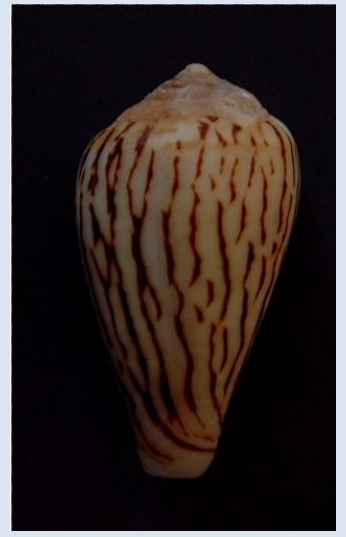
Campiona 31mm CS



Campiona 29mm CS



Campiona 25mm CS



Campiona 24mm CS

Specimens with variations of a similar pattern and wide shoulder in largest specimen (31mm)

Conus species



Campiona 22mm 1.



Campiona 18mm 2.



Campiona 21mm CS 3.



Equimina 26mm GM 4.



Equimina 23mm GM 5.

A series of 5 specimens with brown ground colour, a central band of axial flammules and a spiral row of large spots in upper half. The closest current species would be *C. franciscoi* but that species comes from much further south.
